

**What do I need to know from previous topics ?**

Identify common appliances that run on electricity.

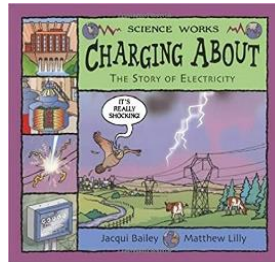
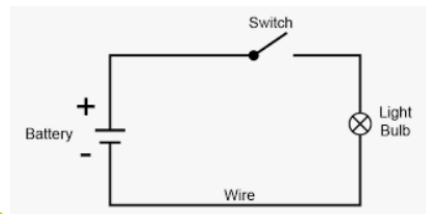
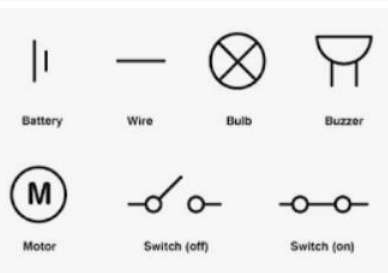
**What will I need to know for future learning?**

Electricity can only flow around a complete circuit that has no gaps. There must be wires connected to both the positive and negative end of the power supply/battery.

Switches can be used to open or close a circuit. When off, a switch 'breaks' the circuit to stop the flow of electricity. When on, a switch 'completes' the circuit and allows the electricity to flow.

A conductor of electricity is a material that will allow electricity to flow through it. Metals are good conductors.

An insulator does not allow electricity to flow through them. Wood, plastic and glass are good insulators.

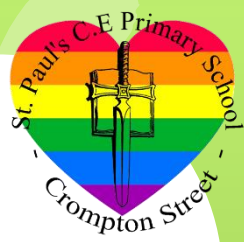


Super Scientist	
<p><b>Maria Telkes</b> 1900 – 1995</p>	
<p>Maria is a famous scientist who made lots of discoveries around solar power. She is best known for creating the first house built with a heating system that ran completely on solar energy.</p>	

Key Vocabulary	Definition
<b>appliance</b>	A machine in your home that you use to do a job such as cleaning or cooking.
<b>cell</b>	Part of a battery
<b>circuit diagram</b>	Electrical components shown in a picture by using standard symbols.
<b>conductor</b>	Materials which allow electricity to flow through them with ease.
<b>insulator</b>	Materials that do not allow electricity to pass through them with ease.
<b>parallel circuit</b>	A circuit with two or more pathways for the current to flow through.
<b>series circuit</b>	A looped circuit where the electricity flows from the positive to the negative terminal of the battery.
<b>switch</b>	A device for making and breaking the connection in an electrical circuit.

## RE Year 4 Summer 2

## 'What is prayer?' and 'The Lord's Prayer'



### What do I need to know from previous topics?

I can pray in Collective Worship. I can pray in class. I know the Lord's Prayer. Prayers can be written or created on the spot.

The church is a special place where Christians meet to worship and pray.

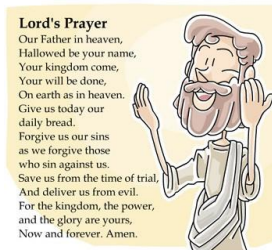
### What will I need to remember for future learning?

Prayer is an important part of the life of a believer.

Prayer is communication with God that helps to build a relationship with Him.

The Lord's Prayer is a model prayer that teaches us how we should pray.

### Key images



### Key Vocabulary Definition

**hallowed** Holy, honoured, respected, set apart.

**God's kingdom** The domain over which God reigns as king, where he is in charge. Where everything is set right.

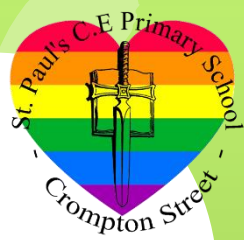
**temptation** The desire to do something which we know we shouldn't.

Lord, make me an  
instrument of your peace;  
where there is hatred, let me  
sow love; where there is  
injury, pardon; where there  
is doubt, faith; where there  
is despair, hope; where there  
is darkness, light; and where  
there is sadness, joy

Francis of Assisi



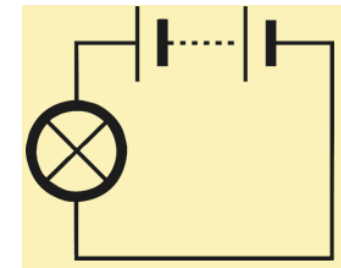
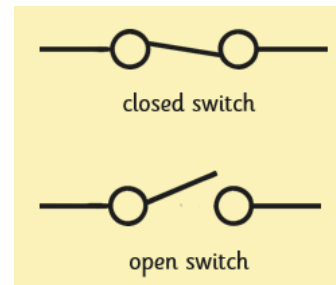
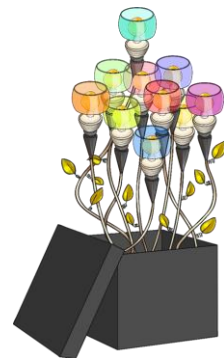
Key Bible Verses  
Matthew 19:13-14  
Matthew 26:36  
Mark 1:35  
Luke 9:28  
John 17:20



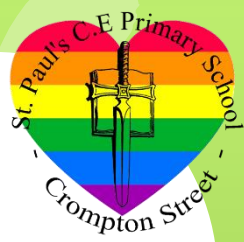
What will I know by the end of the unit?	
In the Victorian period, Thomas Edison invented the 'modern light bulb' that worked for a long time. His invention meant that people could use electricity to light their homes.	The Anglepoise lamp is a balanced-arm lamp designed in 1932 by British designer George Carwardine.
Electrical currents need a path on which to travel. Another name for this path is a circuit.	Electricity flows from the power source, in a loop or circuit, back to the power source.
A switch is used to make or break a complete circuit.	If there is a fault in a series circuit, the other components will stop working. With a parallel circuit, if there is a fault in one component, the other continues to function.

Key Vocabulary	Definition
<b>Battery</b>	A device that can make electricity, with the reaction of certain chemicals.
<b>Conductor</b>	Substances that an electrical charge can pass through without difficulty.
<b>Insulator</b>	A material that is a poor conductor of electricity.
<b>Circuit</b>	A complete path around which electricity can flow.
<b>series</b>	A single pathway through which electricity can flow.
<b>parallel</b>	A parallel circuit contains multiple pathways or branches.

Key diagrams



## Art Year 4 – Term Summer 2: Dale Chihuly – ‘Glass’ sculpture



### What will I know by the end of the unit?

Dale Chihuly is a glass artist from Tacoma, Washington. He is considered the world's most successful glass artist.

Dale Chihuly creates large works of glass to display in public places.

Dale Chihuly does not create his art alone. He works with big teams.

Dale Chihuly is known for using bold colours in his glass.

### Key Vocabulary

### Definition

#### Glass blowing

the art of shaping a mass of melted glass by blowing air into it through a tube

#### transparent

If an object or material is transparent, it means light completely passes through it, and you can see clearly through it.

### Artist focus: Dale Chihuly



## Geography Year 4 – Summer 2 What would my ideal settlement look like?

### What do I need to know from previous topics?

A map is a specially drawn picture of a place from above.

There are different types of housing in our local area, such as detached, semi-detached, terraced, bungalow and flats.

### What will I need to remember for future learning?

Four-figure grid references are used to locate a particular grid square on a map. We use the eastings (horizontal number) first and then the northings.

Maps use symbols to identify places of interest.

Settlements are places that become communities for people to live. People choose to settle in an area if it meets their needs.

Throughout history, Romans, Anglo-Saxons and Vikings all settled in Britain and established some of the towns we live in today.

Maps and aerial photographs can show us how the land is used in an area. In our local area, the land is mostly used for housing.

Key Landmarks  
Walkden Town Centre



### Key Vocabulary Definition

**Land use** how the land in a settlement is used by humans

**Four-figure grid reference** used to locate a particular grid square on a map. We use the eastings (horizontal number) first and then the northings

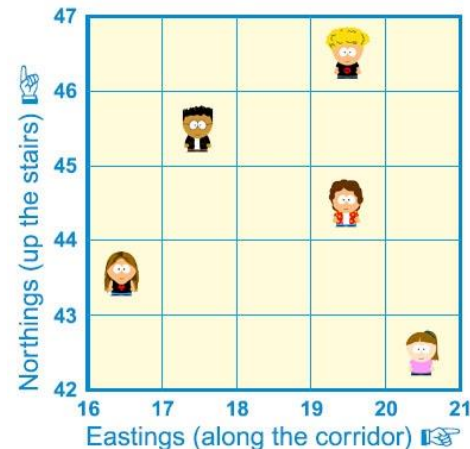
**retail** selling goods to the public

**leisure** use of free time for enjoyment

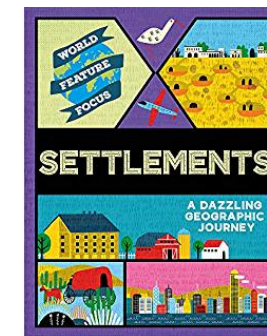
**housing** houses or flats where people can live

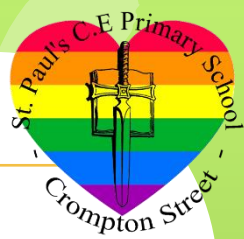
**industrial** production and manufacturing, for example factories and businesses that make products

**agricultural** farming, growing soil, crops or rearing animals



### Key Text





**What will I know by the end of the unit?**

**Puberty** is a time when our bodies change from being a child's body to that of an adult. This is triggered by hormones which can affect our moods and feelings.

**Changes** can be a positive experience or some can be more challenging.

During puberty, females begin to experience a monthly 'bleed' called a **period** lasting between 3 – 7 days.

You develop **emotionally** too during puberty.

Both opposite and same sex couples in England and Wales can choose between a **civil partnership or marriage** when they formalize their relationship.

In England you have to be **18** to get married and it is illegal to force someone into marriage.

**Key Vocabulary**

**Definition**

**puberty**

The time in a person's life when their body begins to change from a child's body to an adult's body.

**hormones**

Chemicals produced in the body that cause puberty.

**compromise**

An agreement in an argument in which the people involved reduce their demands or change their opinion in order to agree.

**conflict**

a serious disagreement or argument

**marriage**

A marriage is formed by vowed and ended by divorce.

**Civil partnership**

A civil partnership is a signed document and ended by a dissolution.



Democracy



Rule of Law



Individual Liberty



Respect & Tolerance

British Values – Influential People

Michelle Obama



Key Dates

29<sup>th</sup> June- Transition Day into Year 5