

Science Year 5 Summer 2

Will we ever send another human to the moon?

What do I need to know from previous topics?

The Earth is split into northern and southern hemispheres. The imaginary line between them is called the equator.

Shadows are formed when the light from a light source is blocked by a solid object.

What will I need to remember for future learning?

Over 2,000 years ago, the Greek philosopher Aristotle discovered evidence that the Earth was spherical.

The Sun is a star. Although it may appear to move throughout the day, the sun stays still.

The Earth is one of eight planets that travel around the Sun. The planets are called Mercury, Venus, Earth, Mars, Jupiter, Saturn, Uranus and Neptune.

The solar system is also home to lots of asteroids, moons, and dwarf planets such as Pluto.

The planets all orbit the sun. The further away a planet is from the sun, the longer it takes to orbit it.

The time it takes to orbit the sun is called a year on that planet.

As the Earth rotates, different sides of the planet are facing the sun at different times. This means that different places in the world experience day time and night time at different times.

As well as orbiting the sun, planets also rotate. The time it takes for a planet to rotate once is a day on that planet.

Key Texts

'Planetarium' by Chris Wormell and Raman Prinja

'The Usborne Official Astronaut's Handbook' by Louie Stowell

Key Vocabulary

Definition

spherical

shaped like a sphere

solar system

the collection of eight planets and their moons in orbit round the sun, together with smaller bodies in the form of asteroids, meteoroids, and comets

planet

an object in space which orbits a star

orbit

to move around a star or planet in a curved path

rotate

move or cause to move in a circle round an axis or centre

axis

an imaginary line about which something rotates

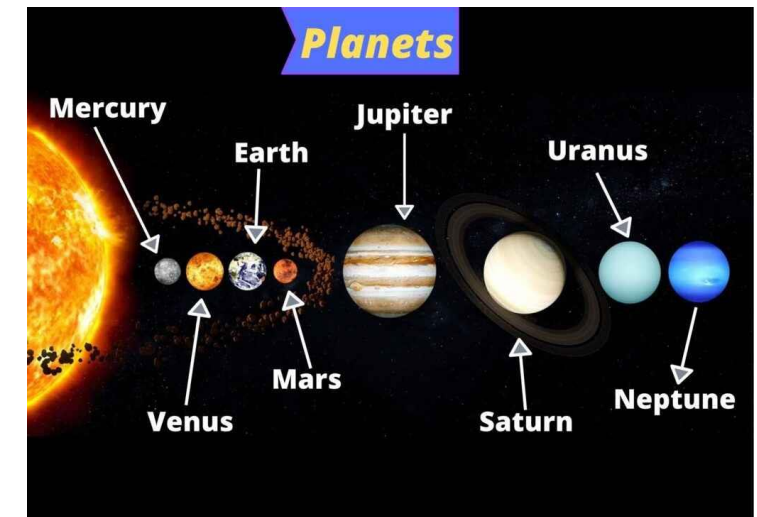
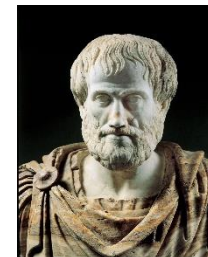
Key diagrams

Key people

Aristotle

Tim Peake

Claudius Ptolemy



R.E. Year 5 Summer 2

How important are holy books in faiths other than Christianity?

What do I need to know from previous topics?

The holy book of Judaism is the Torah.

the holy book of Islam is the Qur'an.

The holy book of Sikhism is the Guru Granth Sahib.

What will I need to remember for future learning?

The Qur'an is very important to Muslims. You must wash your hands before you touch it. It is kept wrapped in a cloth on the highest shelf.

The Guru Granth Sahib is treated with the same respect as a person.

People use lots of words and phrases to avoid saying 'dead' or 'dying' such as 'in a better place', 'at peace' and 'with the angels'.

The Christian view of heaven is a place where there is no death, no mourning, no crying and no pain. There will be no war and there will be fulness of joy.



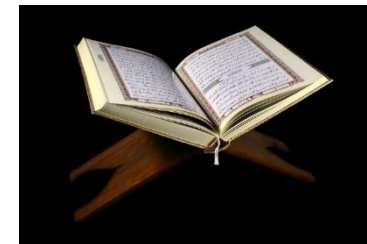
Key Vocabulary Definition

Qur'an the Islamic Holy book

Guru Granth Sahib the Sikh holy book

Vedas Some of the sacred texts of Hinduism.

Heaven A place of peace, love, community and worship. A place where God is.



Key Texts

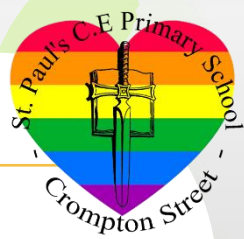
Qur'an

Torah

Guru Granth

Sahib

Hindu holy texts



What will I know by the end of the unit?	
People develop resilience if they have a strong sense of their own self-worth and learn from experiencing things that are less than good, but getting through it.	Sometimes it can feel quite difficult to manage feelings that are more intense . At these times, it might help to share our situation with a trusted adult/friend.
During puberty, you may need to wash yourself more often as you sweat more. Some people find that hormone changes during puberty cause spots to appear more often than before.	Feelings can change very quickly and lead to mood swings . Emotional changes can be just as big a part of puberty as physical changes.
Everyone is unique . Not everyone starts puberty at the same age, some earlier than others and some go through puberty faster than others.	Sometimes, it is appropriate to tell a secret when someone is in an unsafe situation.

Key Vocabulary	Definition
resilience	The capacity to recover quickly from difficulties.
puberty	the time in a person's life when their body begins to change from a child's body to an adult's body
hormones	chemicals produced in the body that cause puberty
secret	It can be like a surprise when someone asks us not to tell anyone about something but some secrets can be bad.
surprise	When something you weren't expecting happens.
mood swings	rapidly and intensely changing emotions.
conflict	a serious disagreement or argument



British Values – Influential People

Archbishop of York



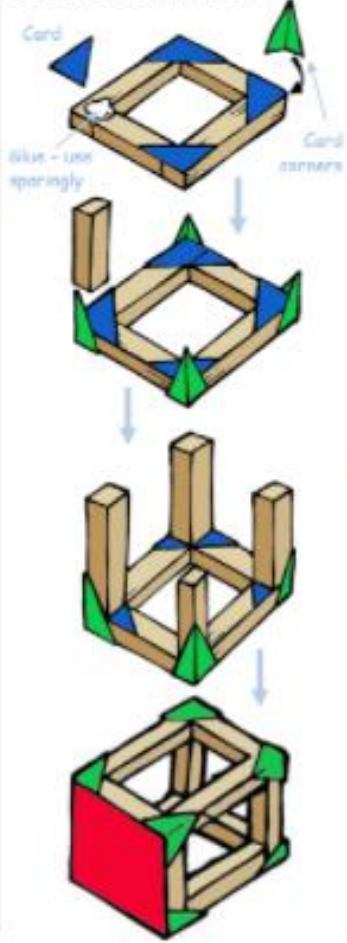
Key Dates
29th June- Transition Day into Year 6

Design and Technology Year 5 Summer

Frame Structures- Bird Hides

Design brief: To design and make a model bird hide

Using square section wood



Techniques and diagrams:

What will I know by the end of the unit?

A bird hide (or hide) is a shelter, often camouflaged, that is used to observe wildlife, especially birds, at close quarters.

Hides allow you not to disturb the birds and other wildlife.

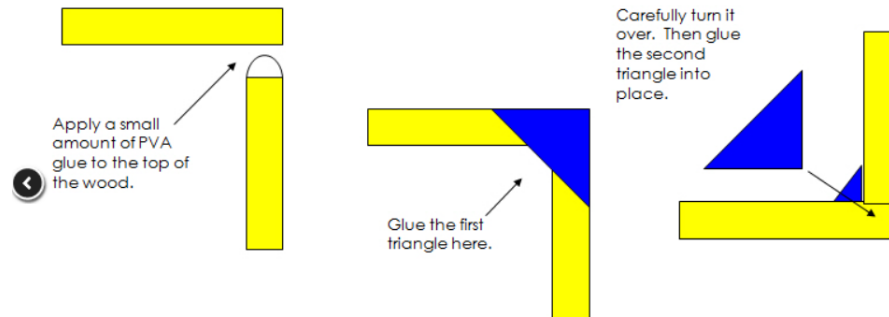
Although hides were once built as a hunting aid, they are now commonly found in parks.

Bird hides allow charities and scientists to observe and record important data about the birds they see.

Bird hides give a warm, dry and safe place to observe the birds which means you can stay longer

We can learn a lot by watching birds' behaviour and eating patterns.

Joining square section wood



Key Vocabulary

Definition

bird hide

a camouflage shelter used to observe wildlife

camouflage

hide or disguise the presence of a person, animal, or object

frame structure

a structure made from thin components

sturdy

strongly and solidly built

machan

a raised wildlife hide

triangulation

the use of triangular shapes to strengthen a structure



Key Texts

'Lizzie and the Birds' by Dawn Robertson

Art Y5 Summer 2- Sculpture and 3D Art: Brazilian Carnival Masks

What will I know by the end of the unit?

Modroc starts off dry, you then dip it in water and then model with it.

The carnivals in Brazil are famous for the amazing costumes.

African culture has greatly influenced the Carnival in Brazil, from costumes to make-up. In Africa, natural objects had special meaning, and were often used as decoration. This can be seen in the details on today's outfits and dancers' colourful body paint.

Masks hit their most globally famous form in 1840, when a wife of an Italian hotel owner threw a lavish masked ball.

Brazil's indigenous cultures employed masks long before Carnival made the country famous for them.

Key Vocabulary

Definition

sculptor

an artist who makes sculptures

modroc

plaster bandage that is used for modelling, casting and crafting.

intricate

very complicated or detailed

carnival

a big festival where there is a lot of music, dancing and people dressing in colourful costumes



Key art work

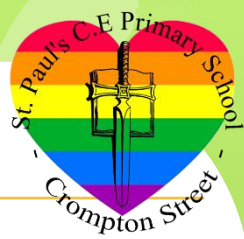
'Untitled' Enrico Baj 1975-6

'Dance Hall Scene' Christopher Richard Wynne Nevinson 1913-14

'The Harlequin's Carnival' Joan Miro 1924-25

Key Texts

'Julian is a Mermaid' by Jessica Love



What do I need to know from previous topics?

Climate is the usual or average conditions over a long period of time. Weather is the specific meteorological conditions on a given day.	Products can be transported from one country to another. This is called trading.
England does not experience extreme changes in weather and generally has warm summers and cool winters.	The tropics cover the region of the Earth closest to the equator. The weather in the tropics is hot all year round.

What will I need to remember for future learning?

Rainforests are found close to the equator so temperatures are hot all year round.	Rainforests are biomes. They are home to a variety of tropical plants and animals and found in regions that are warm all year round.
The Amazon Rainforest previously covered a much larger area and was densely populated. Deforestation has caused the forest area to decrease.	Fair trade is a way of buying goods designed to ensure that producers in developing countries are paid a fair and stable price for the goods that we buy from them.



Important landmarks
The Amazon Rainforest

Christ the Redeemer



Key Texts
The Great Kapok Tree- Cherry
Unfolding Journeys: The Amazon Rainforest by Sparks & Ross

Key Vocabulary Definition

favelas	slums in Brazil's city areas that suffer with poor standards of living
trade	buying and selling goods and services
export	goods or services made in the UK and sold to another country
import	goods or services purchased from one country and brought into the UK
biome	a natural area of plants and animals. The world is divided into lots of different biomes and they are all different depending on their climate.
deforestation	when forests are cut down and the area is permanently cleared for another use