

**What do I need to know from previous topics?**

Animals need exercise and a balanced diet to stay healthy.	Blood is pumped around our body by the heart.
Drugs can be good and bad.	Our heart rate gets faster when we exercise.

**What will I know by the end of the unit?**

The heart pumps blood to the lungs to get oxygen. It then pumps this oxygenated blood around the body.	Blood vessels are a series of tubes inside your body. They move blood to and from your heart.
Your heart beats somewhere between 60 and 100 times a minute, but can beat even faster if needed.	The circulatory system includes the heart, blood vessels and blood.
Nutrients are transported throughout your body through blood via capillaries, tiny blood vessels that connect arteries to veins.	Blood is made up of different components. Some of the main components are red blood cells, white blood cells and plasma.
A 'drug' is something that you eat or drink that has an effect on your body. This can be good or bad depending on what they are and how they are used.	Blood carries oxygen around the body which is used to power the body.

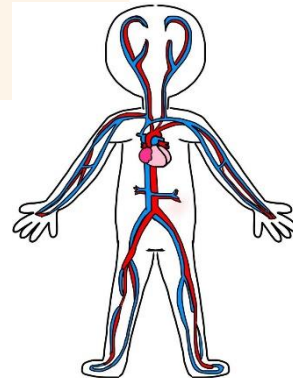
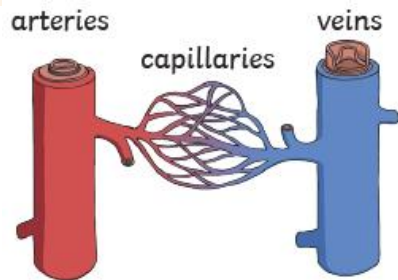
Key Vocabulary	Definition
<b>Circulatory system</b>	A system which includes the heart, veins, arteries and blood transporting substances around the body.
<b>nutrients</b>	Substances that animals need to stay alive and healthy.
<b>capillaries</b>	Very thin blood vessels. They bring nutrients and oxygen to tissues and remove waste products.
<b>artery</b>	A blood vessel that carries blood away from the heart.
<b>pulse</b>	The thump in your arteries each time your heart beats
<b>vein</b>	A small vessel that carries blood to the heart.

Key Texts

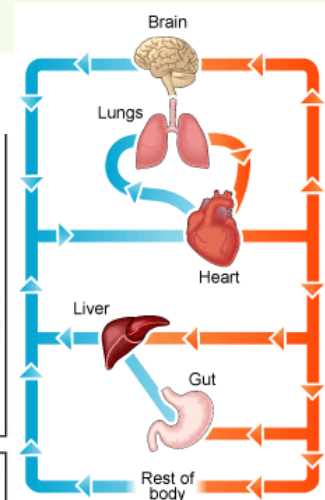
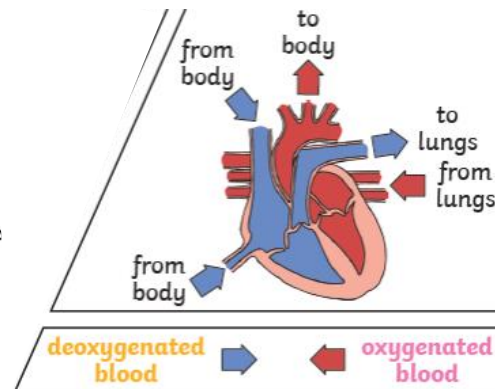
The Sprog Owner's Manual by Babette Cole

Key people

William Harvey  
Alexander Fleming

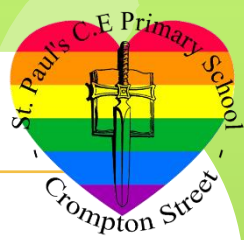


Key diagrams



## Geography Year 6 – Spring 1

## Where do maps take us?



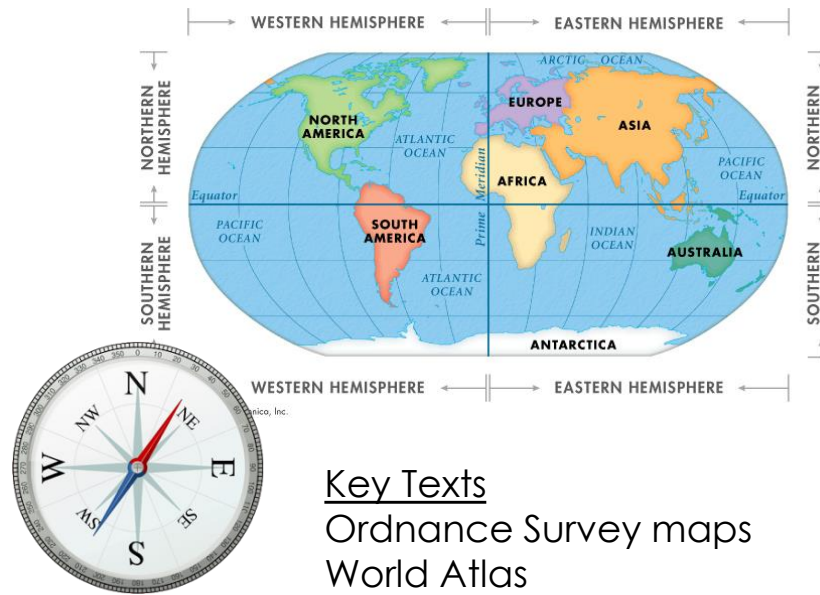
### What do I need to know from previous topics?

Four-figure grid references are used to locate a particular grid square on a map. We do the eastings (horizontal number) first and then the northings.	Ordnance Survey maps use symbols to identify places of interest.
The four cardinal points on a compass are North, East, South and West.	Our local area of Walkden has changed over time due to a growth in population.
The equator divides the Earth into Northern and Southern hemispheres.	Lines of latitude and longitude are used to locate places accurately on the Earth's surface.

### What will I need to remember for future learning?

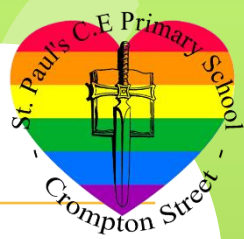
A six-figure grid reference gives a more specific location and is more accurate than using a four-figure grid reference.	An eight point compass shows the additional directions of North East, South East, South West and North West for a more accurate reading.
The USA is a large, North American country with rural, urban and desert areas of land.	

Key Vocabulary	Definition
<b>Ordnance Survey</b>	An Ordnance Survey map is a detailed map produced by the British or Irish government map-making organisation.
<b>contours</b>	lines drawn on maps that join places of the same height. They can be used to see the shape of the land.
<b>sustainability</b>	the idea that humans must interact with the environment in a way that ensures there will be enough resources left for future generations.
<b>region</b>	an area of land that has common features.



OS Map Symbols									

Key Texts  
Ordnance Survey maps  
World Atlas



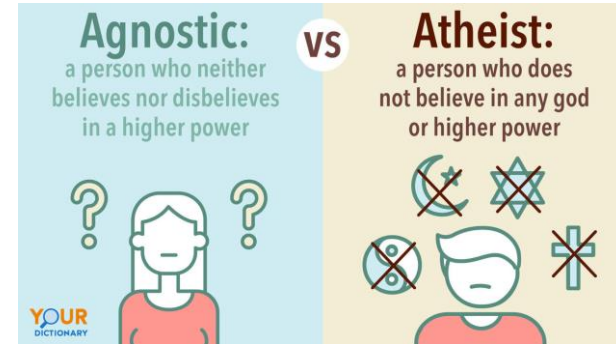
**What do I need to know from previous topics?**

Not everyone believes in god.	There are 6 big religions in the world as well as non-religious people.
-------------------------------	---

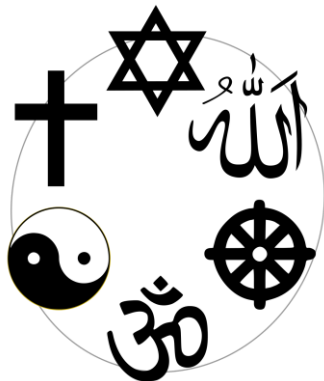
**What will I know by the end of the unit?**

A non-religious person might be an atheist (believes there is no god) or agnostic (doesn't know if there is a god).	In the Bible there are different similes and metaphors about God which help Christians to know what God is like.
Some people start with a faith and lose it or vice versa. There are many different reasons for this.	Science and Christian beliefs can explain how the universe works with scientists and the Bible describing it in different ways.
Belief in God can lie on a continuum depending on how belief affects the way they live their life.	

Key Vocabulary	Definition
<b>Theist</b>	A person who believes in God.
<b>Atheist</b>	A person who says there is no god.
<b>Agnostic</b>	A person who says they don't know or cannot know if there is a god or not.



Key images



Key Texts  
Bible metaphors and similes about God





## Art Year 6 Spring: Hokusai- The Great Wave (Collage and Digital Artwork) )

### What do I need to know from previous topics?

Collage pieces of art are created by sticking lots of different papers, fabrics or other materials onto a background.

Shapes that travel into the distance follow the perspective lines in the direction of the vanishing point.

Warm colours are orange, yellow, and red. Blue, purple, and green tend to be cold colours. Warm and cold colours evoke different moods and feelings in a piece of artwork.

The foreground, middle ground, and background divide the landscape into different planes that the artist uses to create a sense of depth.

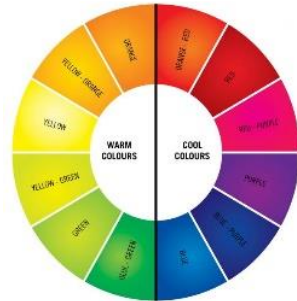
When creating a 3D drawing, we need to consider the effect of the light.

### What will I need to remember for future learning?

In this artwork, Hokusai plays with perspective by showing the waves to be much larger than Mount Fuji. Artists often manipulate perspective in their work to create abstract pieces of artwork.

### Key texts:

River topic books linked to Geography topic



### Key artists and artwork

36 Views of Mount Fuji' series by Hokusai  
Katsushika



### Key Vocabulary

### Definition

#### Hokusai

a Japanese artist and printmaker, famous for his woodblock prints

#### series

A cohesive collection of artwork by the same artist. It may include the same subject matter, colour palette or techniques.

#### Ukiyo-e

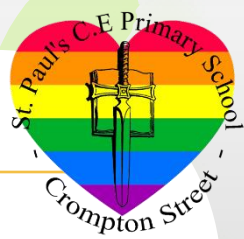
Japanese art form using woodblock prints

#### tactile

physical textures in a piece of art

#### negative space

the space around and between objects in an image



**What will I know by the end of the unit?**

To know that it is illegal to share sexual images of children under 18 years old.	To understand the importance of getting someone's permission before taking and sending a photo of them to someone else or posting online.
That mental health is a normal part of daily life, in the same way as physical health.	To understand that addiction is a form of behaviour. We tend to think of an addiction being a more negative thing.
There are age restrictions on cigarettes and alcohol which are used to prevent harm to children.	All drugs have the potential to be harmful if misused or if someone has an adverse reaction to them.
An illegal drug means it is against the law to possess, supply or produce. Someone breaking this law could be given a fine, prison sentence and criminal record.	There are a range of short term (e.g. feeling drunk, affecting sleep, feeling nauseous) and long term effects (e.g. increased risk of heart disease, liver disease, raised blood pressure) to drinking alcohol.

<b>Key Vocabulary</b>	<b>Definition</b>
<b>addiction</b>	An addiction can be seen as an extreme form of a habit.
<b>Mental health</b>	The way we think and feel about ourselves and the world around us.
<b>drug</b>	A substance people take to change the way they think, feel or behave.
<b>Legal drugs</b>	These are allowed to be sold in this country.
<b>Physical needs</b>	Things you need in order to survive – food, water, fresh air, shelter
<b>Emotional needs</b>	Things that contribute to our emotional health and wellbeing – contact with others, feeling a sense of self worth, feeling that we are good at some things

**Key Dates**

- 6<sup>th</sup> February-Safer Internet Day
- 17<sup>th</sup> February-Random acts of kindness day
- 5<sup>th</sup>-9<sup>th</sup> February- Children's Mental Health Week

**Mini Minds:**



Braveasaurus



Dreamasaurus



British Values – Individual Liberty

- We value everyone's input and opinions.
- We try to see things from other's point of view.
- We are encouraged to make choices for ourselves in a safe and supportive environment.