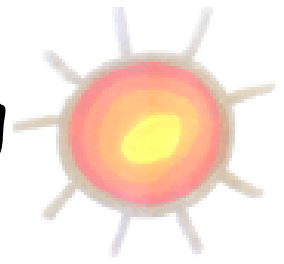




Marking/Redrafting Symbols



SYMBOL	FUNCTION
<u>unberline</u> <u>rong</u> plus <u>sp</u> (in margin)	Spelling error - correction given by teacher Spelling error - self correct with a dotted line (do it yourself!)
?	What do you mean? Explain or check its understanding.
Oops	Mistake: I don't want that word (simple line not scribble)
<u>WW</u>	Vocabulary: wrong word or choose a better word (written above the word)
/	New line needed (placed in body of text)
//	New paragraph needed (placed in body of text)
^	Omission: a word/letter/number is missing (placed in body of text)
o @eddish is a town,	Wrong case (upper/lower) or wrong/missing punctuation
()	Improvement Point needed (brackets placed around text)
I/G/S/M	Independent, Guided, Shared/Supported, Modelled (placed next to L.O.)
†	Your tense is wrong here (placed in margin)
VC	Verbal feedback given (placed in the body of the text)

